



MGPA
MANDALIKA GRAND PRIX ASSOCIATION

PROJECT UPDATES

VISION & MISSION OF MGPA



Vision

“TO STAGE WORLD CLASS (MOTOR)SPORTING & ENTERTAINMENT EVENTS”

Mission

“TO BRING WORLD CLASS MOTORSPORTS AND COMPLIMENTING ENTERTAINMENT EVENTS TO THE ISLAND OF LOMBOK AND TO POSITON “THE MANDALIKA INTERNATIONAL STREET CIRCUIT” AS A GLOBAL BRAND”

Positioning:

- i. Promote Global Tourism for Indonesia and build on the Wealth for the Local Communities
- ii. Deliver the most Environmentally friendly circuit in the world
- iii. To stay “true” to the concept of being a Street Circuit
- iv. Sustainable Business Model by focusing on developing and operating one of the most cost-efficient circuits in the world



CIRCUIT UPDATES



THE
MANDALIKA

- 1.175 ha
- 16.000 hotel rooms
- 350.000m2 commercial space
- 78 berths Marina
- 120 ha Theme Park
- 16km coastal beach front [5 beaches]

Mandalika Lombok



STREET CIRCUIT

9 + 18 HOLE GOLF COURSE

BRANDED THEME PARK

SPORTAINMENT DISTRICT



Mandalika Lombok

8 AUGUST 2018

STRATEGIC INVESTOR & PARTNER

**MASTER LEASE AGREEMENT
SIGNED BETWEEN**

**ITDC AND
VINCI CONSTRUCTION GRANDS
PROJETS (VCGP)**

**USD 1 BILLION
INVESTMENT OVER 15
YEARS**

Total Size of 131 ha with over
2,000 hotel and residential rooms, commercial
properties and entertainment facilities



A leading player in concessions and construction, operating in some 100 countries.



194,428

EMPLOYEES IN 2017



270,000
PROJECTS A YEAR



**MORE THAN
3,000**
BUSINESS UNITS



2017 REVENUE
€40.2 BILLION



**MORE THAN
100 COUNTRIES**



31 DEC 2018

LOAN AGREEMENT SIGNED
BETWEEN

AIIB & ITDC for

USD 248.4 million

Infrastructure Loan Package to
be dispersed over the next 5
years



28 JAN 2019

SIGNING OF PROMOTERS
AGREEMENT BETWEEN
DORNA & ITDC FOR



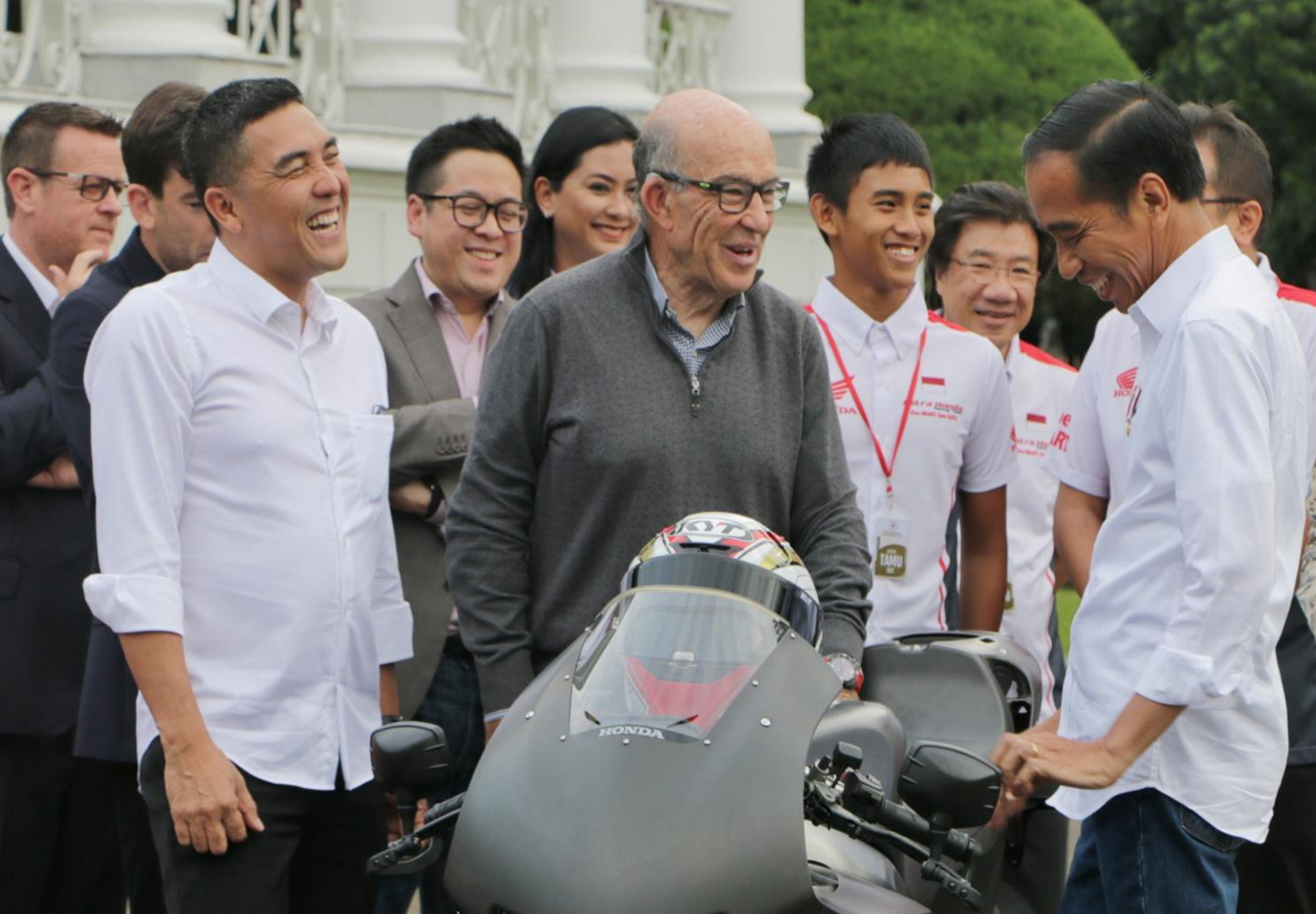
MotoGP™

AND

MOTUL WORLD SUPERBIKE™ -
SBK

FOR 2021





11 MAR 2019

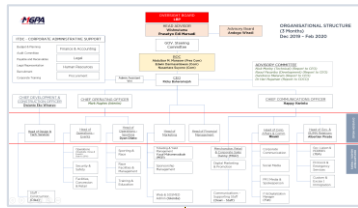
AUDIENCE WITH PRESIDENT
JOKOWI. PRESIDENT
COMMITTED TO CARMELO
EZPELATA CEO OF DORNA,
SL:

*“Indonesia will be
ready for 2021”*

KEY MILESTONES - MGPA

2019 PLANNING

23 NOV 2019
Pre-Launch MGPA



DEC 2019
Ramp-Up
Organizational Structure
Implemented

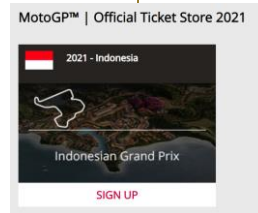
2020 IMPLEMENTATION

JUN 2020

MOTORSPORT CENTRE SCBD
GRAND OPENING



DEC 2020
Track Completion



20th JAN 2020
PRE-BOOKING



JUL/AUG 2020
2021 CALENDAR
RELEASE & **FULL-SALES**

2021 EXECUTION

SEP/OCT/NOV 2021**

WSBK & MOTOGP

JUN 2021**
TESTING
WSBK

FEB/MAR 2021
PRE-SEASON TESTING
MOTOGP



Timeline Excludes:

- ** WSBK Testing is planned for the Summer of 2021 and Race for September 2021
- ** MotoGP Race is planned for October 2021
- Other Partnership Development with Key Stakeholders (PELINDO III, Angkasa Pura Support, Telkomsel, BUMN, Private Companies as well as Local and Central Government)

CONSTRUCTION INSPECTION BY MINISTRY OF TOURISM



URNS 16 & 17



MAIN STRAIGHT



MAIN STRAIGHT EARTHWORKS ON CIRCUIT



CONSTRUCTION UPDATES

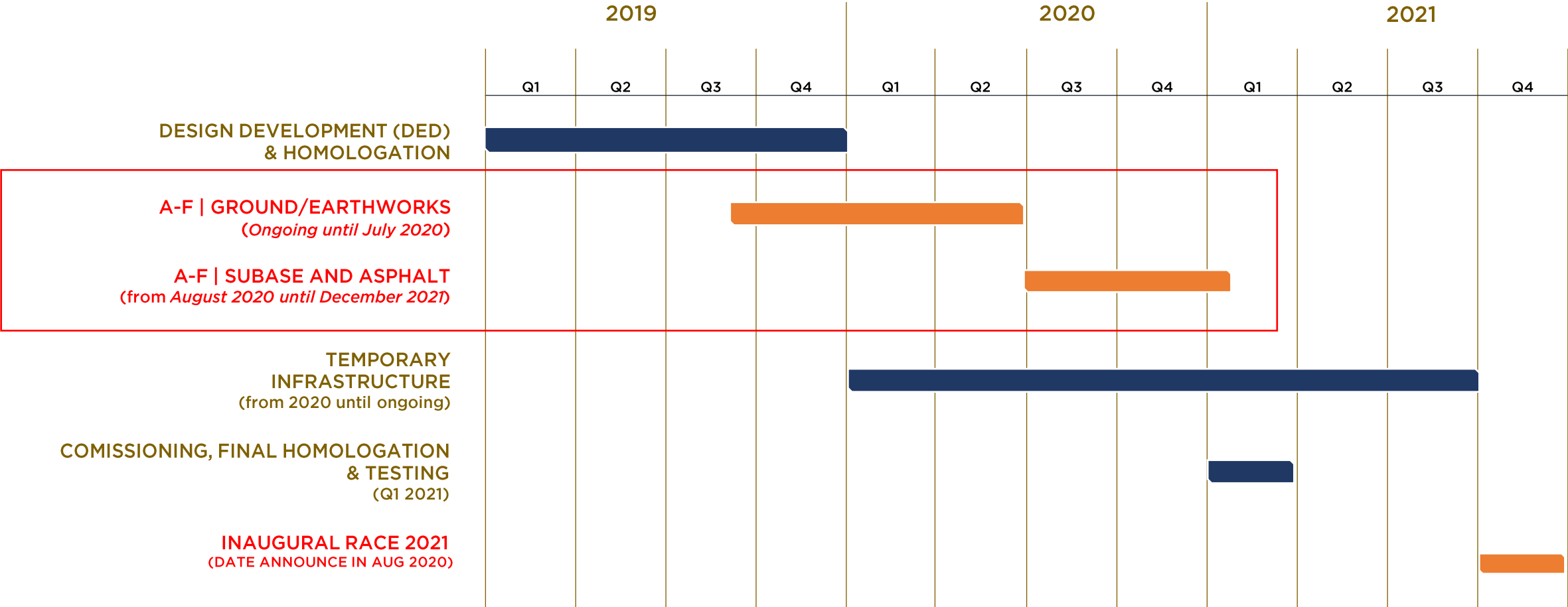
- Earthworks has already commenced from September 2019 based on established centre line and preliminary technical designs as well as typical cross sections and guidelines from FIM documentations.
- Embankment will commence upon homologation and design schematic approvals and experts from our partners will be brought in for detailed supervision.
- Accordingly, earthworks and embankment work, including soil stabilisation methodologies will be completed by June 2020.
- Parallel work will commence on the main track will commence from latest January 2020.

- Local Contractors : Earthworks under WIKA, Main Construction under WASKITA
- Consortium: ITDC, Waskita and Subsidiaries of ITDC and Vinci (Nusantara Properties & Makraab)
- Operator: MGPA (Mandalika Grand Prix Association), Subsidiaries of ITDC (Majority) and Roadgrip (Minority)

CONSTRUCTION TIMELINE (Zones)



CONSTRUCTION TIMELINE



**MASTERPLAN VISION
OF STREET CIRCUIT
COMPLEX 2021**

LENGTH
4.31 km

OF TURNS
17 Turns

Paddock Area
Pit building with up to
40 garages

**GRAND STAND SEATING
CAPACITY**
50,000+ Seating
Capacity

GENERAL ADMISSION
Area available for up to
138,000 Non-Seated
area

HOSPITALITY SUITES
Planned for up to 7,700
Spectators





INDONESIAN MOTOGP 2021 at The Mandalika International Street Circuit



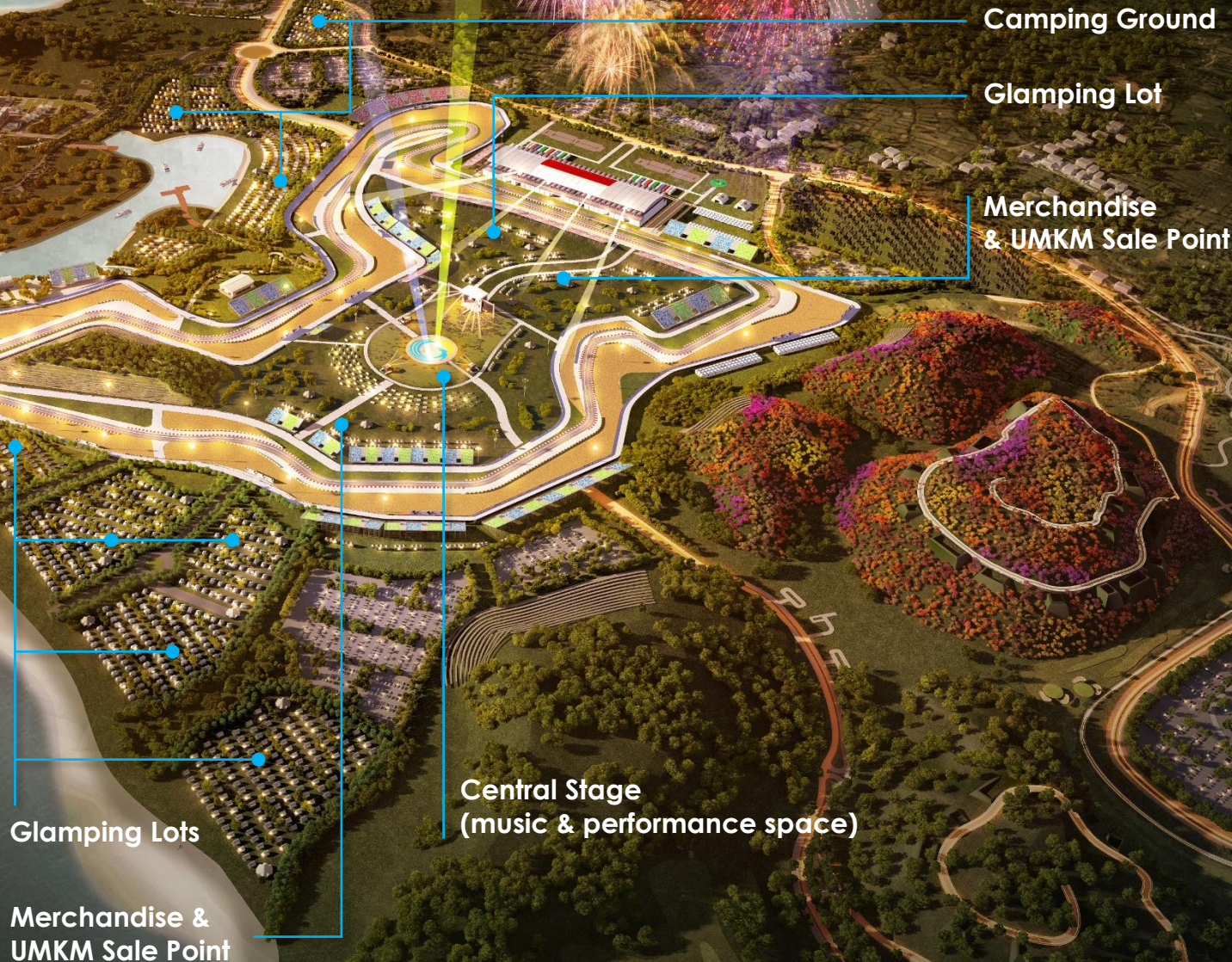
Total Spectators target:
164,510 pax (over 3-days event)

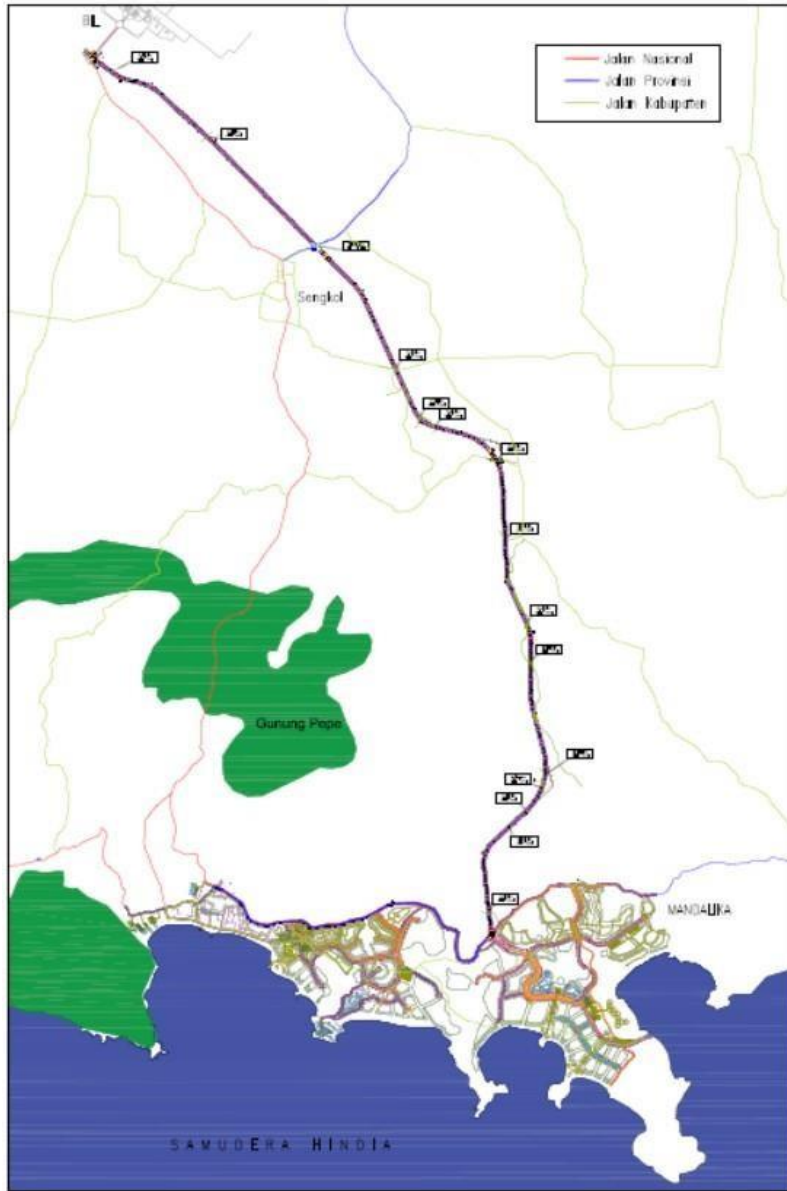
Total Accommodation target :
for ~65,000 pax
(incl. hotel rooms, villas,
camping/glamping/Cruise Ships, Temporary
Accommodation (Land & Sea))

Air & Sea Transportation:
Lombok International Airport
Gili Mas Cruise Terminal

Creative Economy sub-sectors opportunity:

- Souvenirs / arts & crafts
- Culinary
- Performances (music, dance)





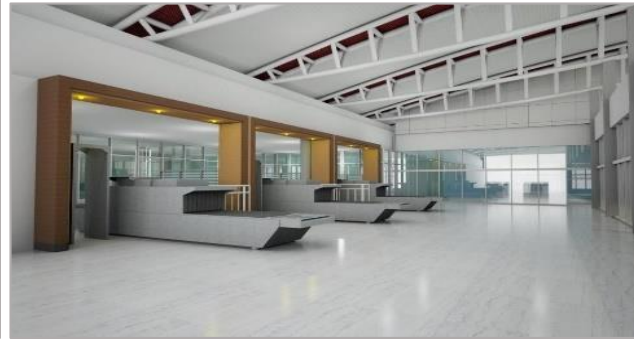
- Panjang jalan : 17,39 KM
- Lebar jalan (ROW) : 50 Meter
- Total lajur : 4 lajur
- Total underpass/overpass : 15 titik
- Jembatan : 1 spot
- **Commence Construction Beginning 2020**



 **PELINDO III**
Beyond Port of Indonesia

- Approximately 1.0 – 1.5 hours away from the Mandalika
- New Seaport to accommodate both Cruise Ship Passengers and extensive Cargo
- Dimension of Berth equates to 26m x 440m
- 4 different Jetty Bridges
- Sea Depth set at 12.0 m with an elevation Deck of 4.5m
- **CONSTRUCTION COMPLETED**





Angkasa Pura | AIRPORTS

- Runway extension from 2,750m to 3,300m
- Expansion of the Terminal planned and expanded to 20.000 m2
- Expansion Plans to the Northern Part of the Airport
- Expansion and Extension of the Aprons and Taxiways to the West side of the Airport
- Development of a Terminal Corridor, Fixed Bridges as well as improvements on the Departure and Arrival Zones
- Improvements on Drop off and Pick up Zones
- Runway Overlay to be strengthened and improved
- **CONSTRUCTION ON-GOING AND DUE TO BE COMPLETED BY END 2021**

FUTURE CAPACITY PLANS

2020 – 2023

4.000.000 Passengers

2024 – 2029

6.000.000 Passengers

2030 – 2035

10.000.000 Passengers



LEGENDA

RUTE UTAMA

- Epicentrum - Gili Mas
- Epicentrum - Bangsal
- Epicentrum - Kayangan
- Epicentrum - Mandalika

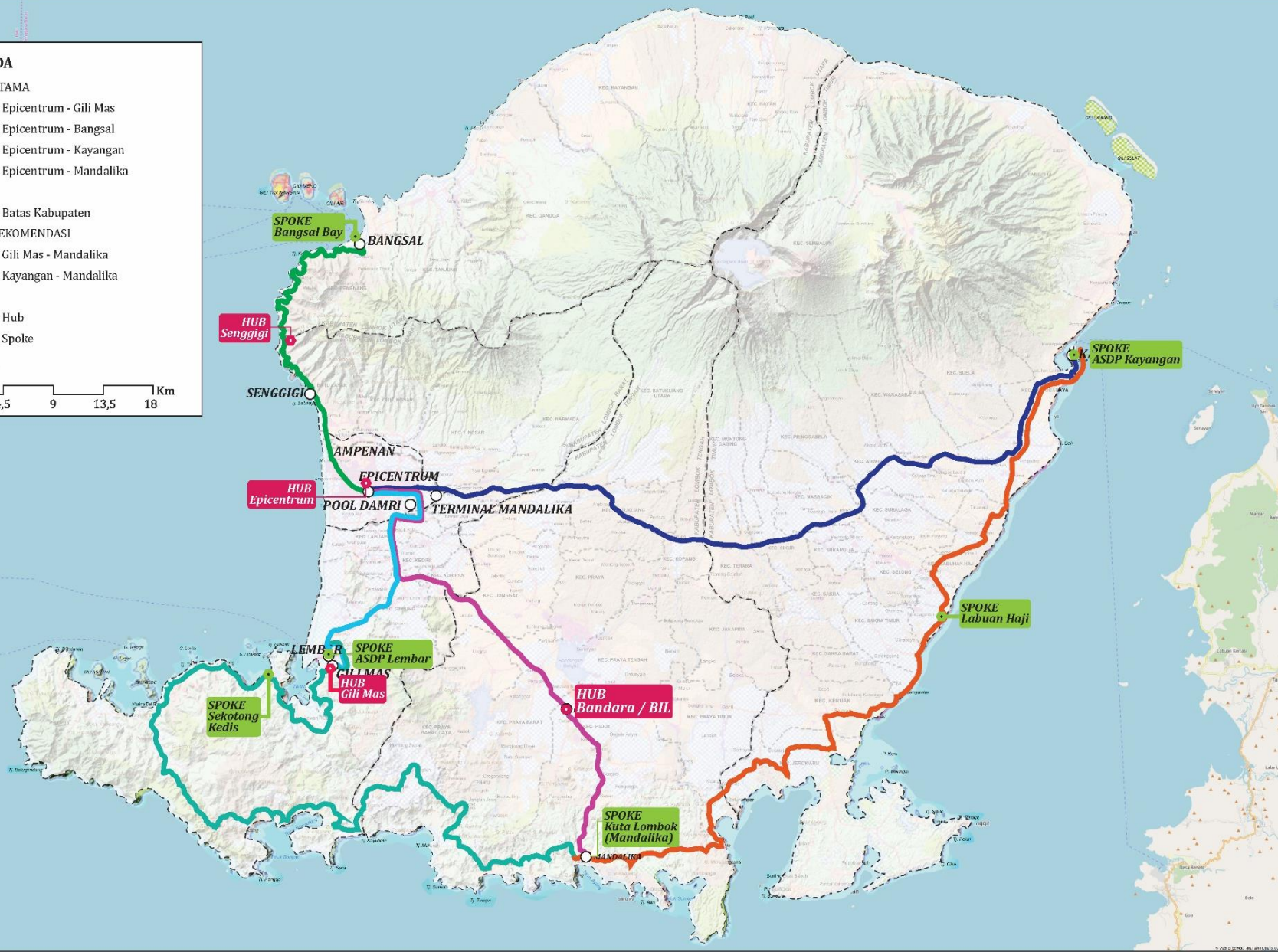
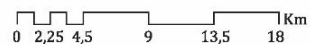
----- Batas Kabupaten

RUTE REKOMENDASI

- Gili Mas - Mandalika
- Kayangan - Mandalika

- Hub
- Spoke

SKALA



PENINGKATAN SARANA TRANSPORTASI

- Penyiapan sistem transportasi darat dari Lembar – Bangsal – Mataram – BIL – Mandalika – Kayangan
- Menyiapkan 4 Hub antara lain:
 - Bangsal
 - Lembar
 - Lombok Epicsentrum Mall
 - Bandara Internasional Lombok
- Pembangunan 6 Spoke antara lain:
 - Bangsal Bay
 - Lembar
 - Sekotong Kedis
 - Mandalika
 - Labuan Haji
 - Kayangan



OTHERS

- Temporary Accommodation Providers
- Telkom
- Pertamina Energy
- PLN Electricity
- Sea Transport ASDP
- Land Transport (Damri)
- Logistics (APS / APL)
- Airlines (Garuda / AirAsia)

- Ministry of Sports
- Ministry of Tourism
- Ministry of BUMN



MARKET INFORMATION & DATA

2021 Inaugural Races



MOTOGP | MAIN EVENT



23.6 Million Social Media Followers



428 Million Homes shown in 207 Countries (Television Reach)



85 Million Web Visits & 28.5 Million Unique Users



150,000 Average Attendance to a Race



WORLD SUPERBIKE | SECONDARY EVENT



5 Million Social Media Followers

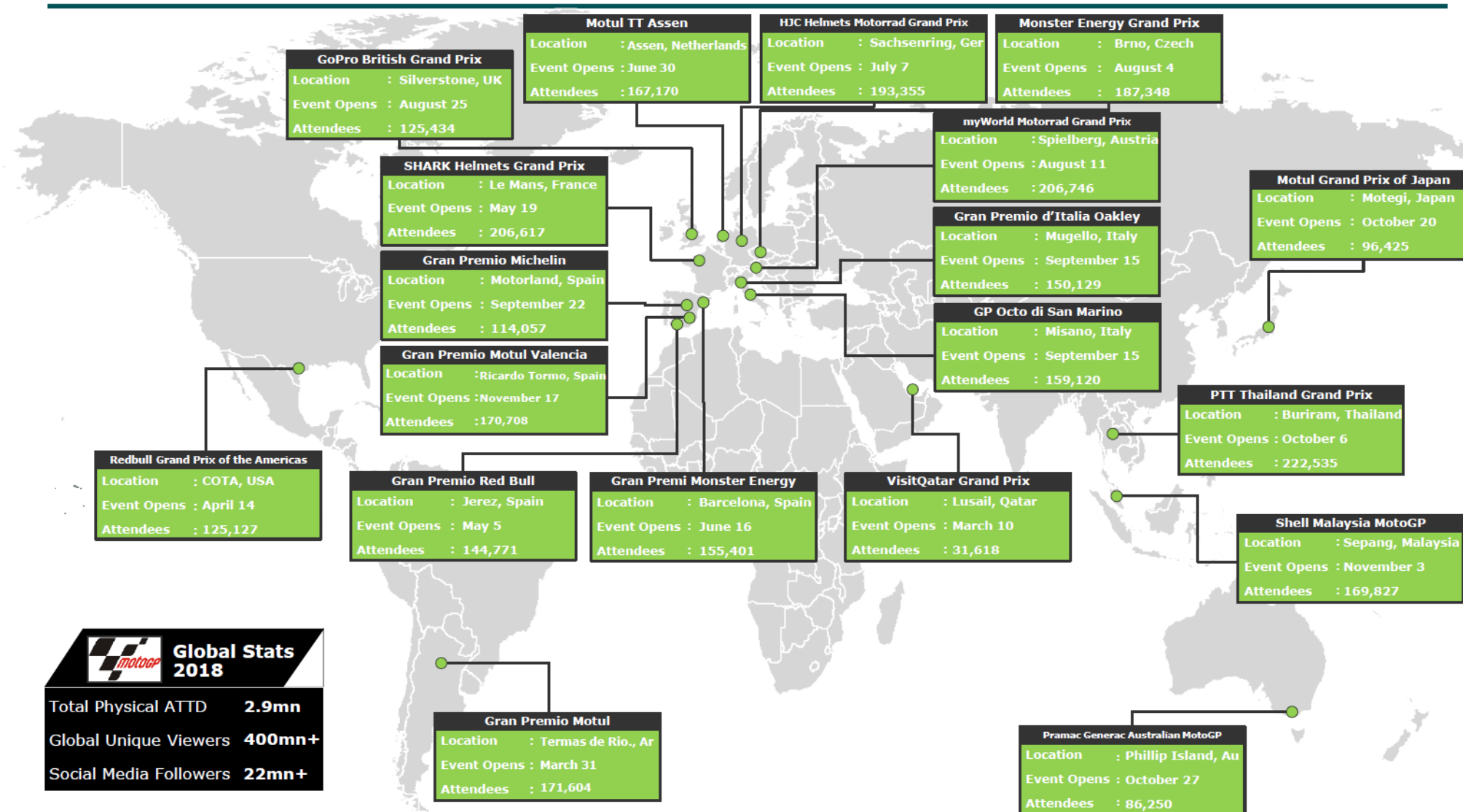


Televised in over 180 Countries



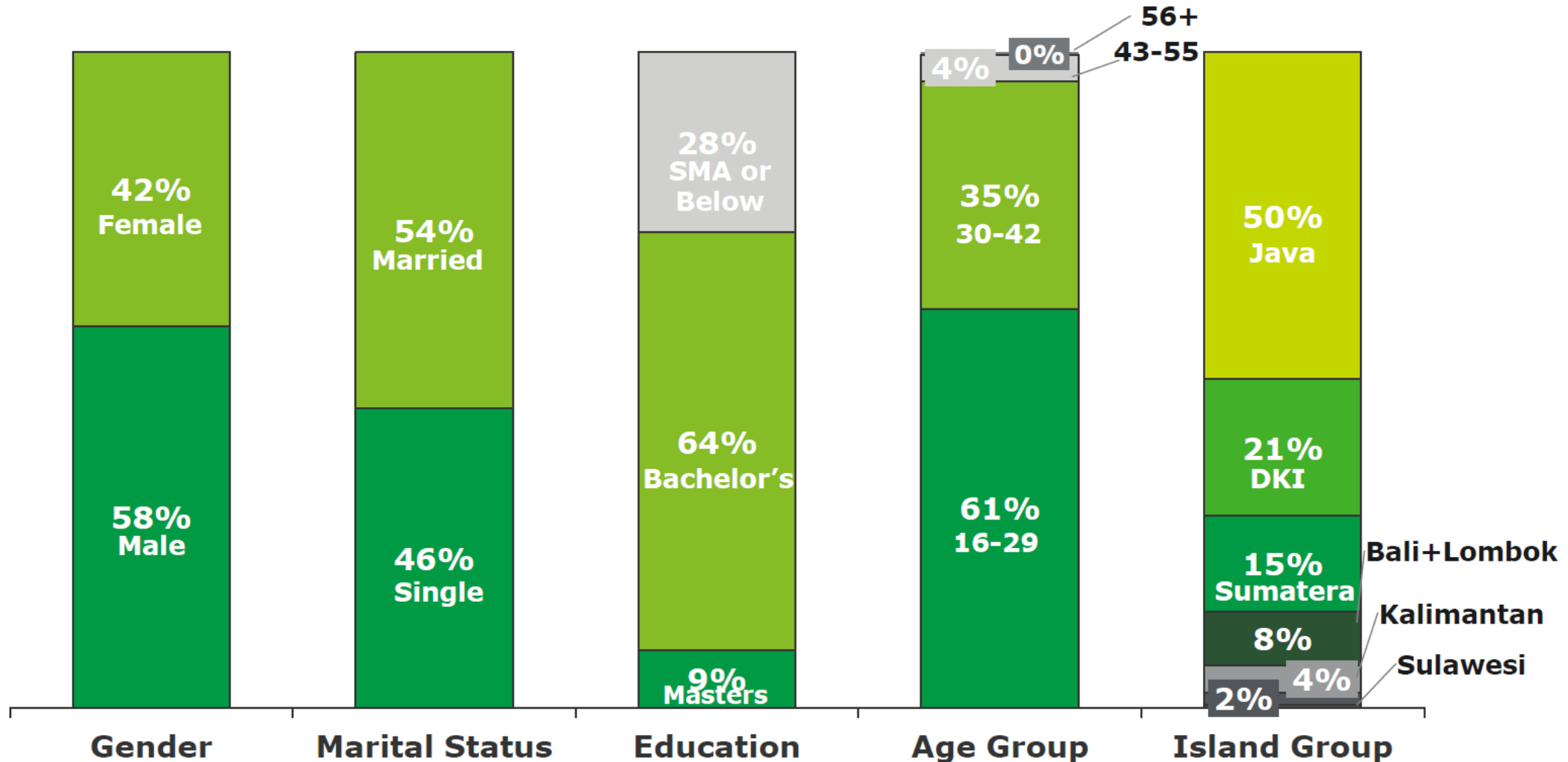
57,000 Average Attendance to a Race

Globally, 19 circuits hosted MotoGP races, drawing in 2.9mn attendees in 2018



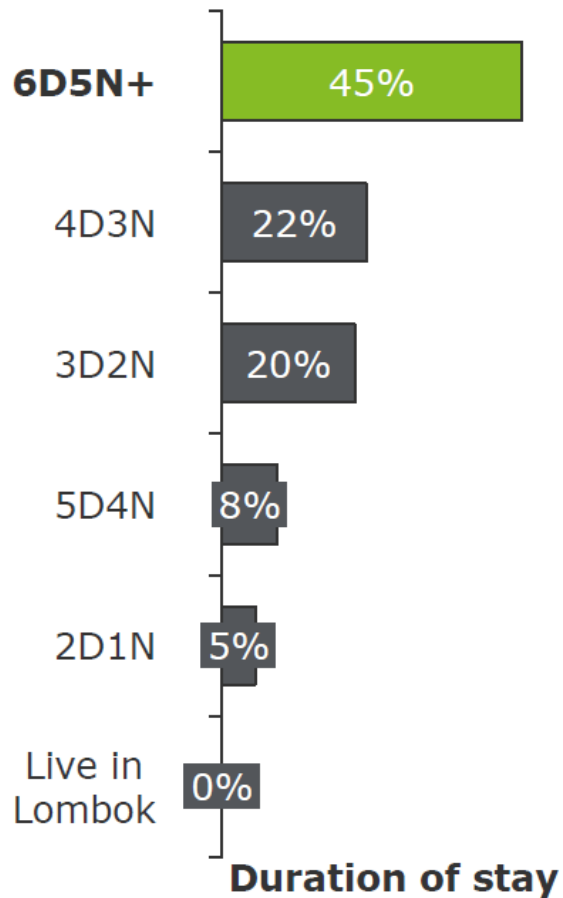
MotoGP fans in Indonesia are a young demographic and social-economic base

Demographic Profiles of Surveyed Respondents
(Total Respondents N = 1,025 fans)

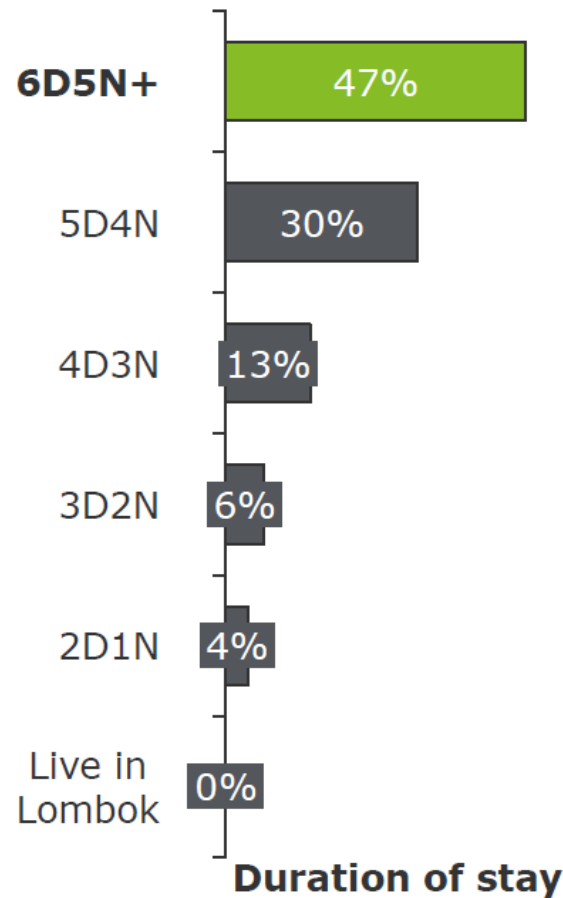


1 Surveyed fans indicated high interest to stay overnight in Lombok

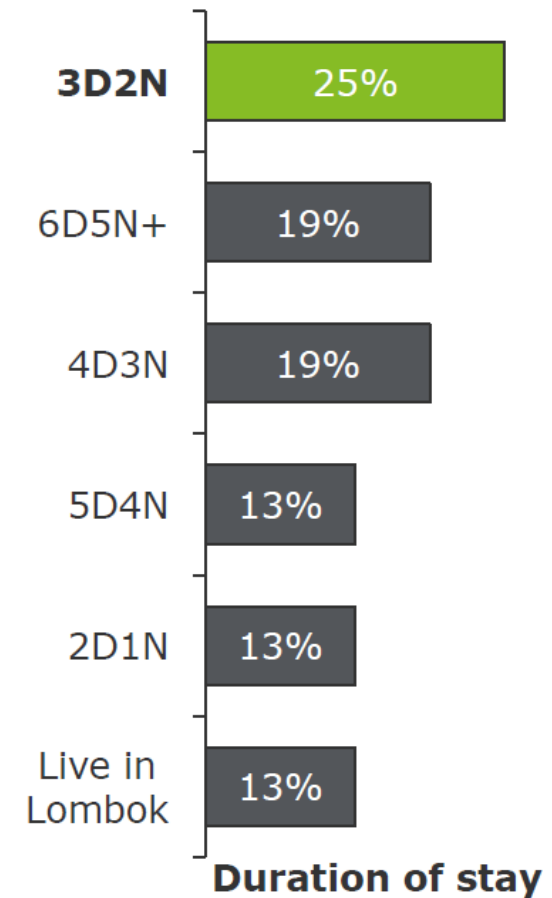
Duration of stay in Lombok for foreigners in Bali (60 pax)



Duration of stay in Lombok for foreigners in Lombok (83 pax)

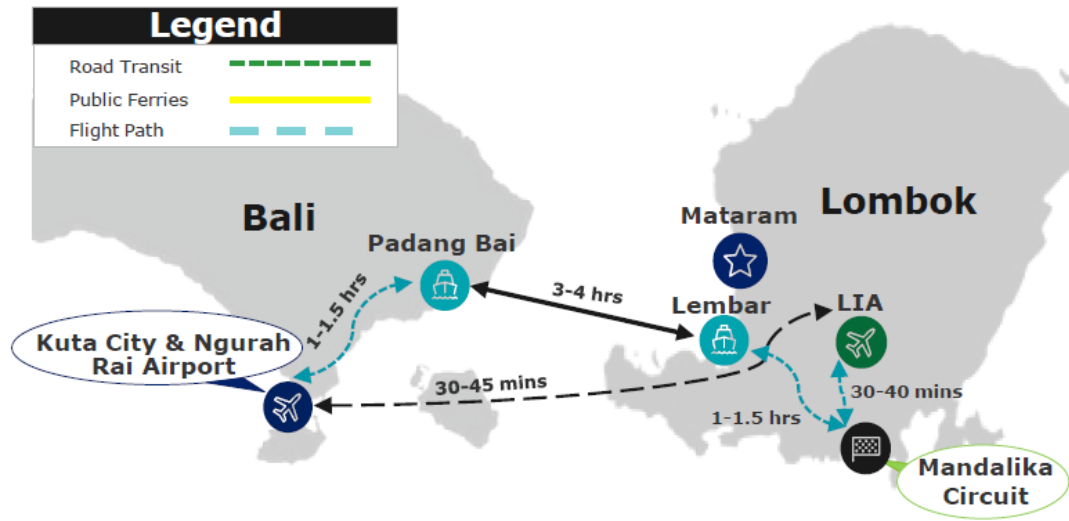


Duration of stay in Lombok for Balinese (63 pax)



1 Lombok is more than a day's away from Bali and logistics difficulties

Map & Time Considerations



Flight & Ferry Commute Reality – Incredibly Time-Consuming

Daily transit between Bali/Lombok unfeasible simply due to time considerations.

Ferries

- Travel to Port Padang Bai (1 hour away from Kuta)
- Need to arrive 30 minutes before ferry leaves
- Ferry takes 3-4 hours to arrive
- Travel to Mandalika from Lembar around 1 hr to 1.5 hrs

Total Time from Kuta (One Way): 5.5-7.5 hrs

Flight

- Travel to Ngurah Rai Airport (10 mins from Kuta)
- Need to arrive 1 hour before flight
- Flight takes 30-45 mins to
- Travel to Mandalika from Airport 30 mins

Total Time from Kuta (One Way): 2-2.5 hrs

Survey Insight

Based on Survey Results of the "30" Bali Respondents that stated they are going to watch the MotoGP "26" stated they were going to stay in Lombok longer than the duration of the event.

We can assume they are looking for accommodations in Lombok for the entire duration of their trip.

MotoGP Schedule *based on Silverstone

Friday		Saturday		Saturday	
Moto3 FP1 Starts	9 AM	Moto3 FP3 Starts	9 AM	Moto3 FP3 Starts	9 AM
Moto2 FP2 Ends	~5 PM	Moto2 Qual. Ends	~5 PM	Moto2 Qual. Ends	~3 PM

Ferry Commute Schedule

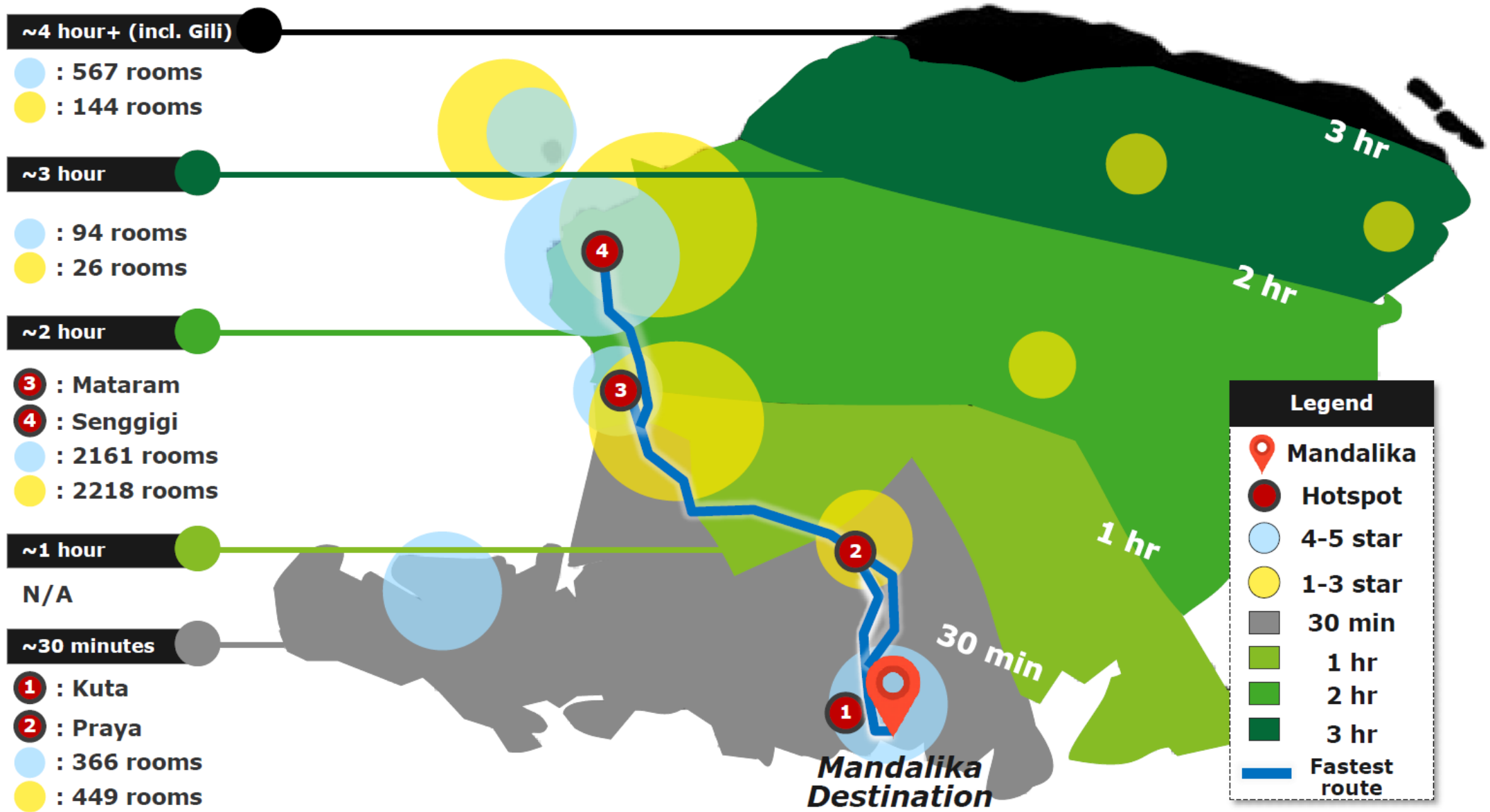
Friday		Saturday		Saturday	
Padang Bai	3.30AM	Padang Bai	3.30AM	Padang Bai	3.30AM
Arrive at Circuit	~9AM	Arrive at Circuit	~9AM	Arrive at Circuit	~9AM
Leave Circuit	~5PM	Leave Circuit	~5PM	Leave Circuit	~3PM
Arrive back in Bali	10.30PM	Arrive back in Bali	10.30PM	Arrive back in Bali	8.30PM

Flight Commute Schedule

Friday		Saturday		Saturday	
Denpasar Airport	8AM	Denpasar Airport	8AM	Denpasar Airport	8AM
Arrive at Circuit	~10AM	Arrive at Circuit	~10AM	Arrive at Circuit	~10AM
Leave Circuit	~5PM	Leave Circuit	~5PM	Leave Circuit	~3PM
Arrive back in Bali	~7PM	Arrive back in Bali	~7PM	Arrive back in Bali	~7PM

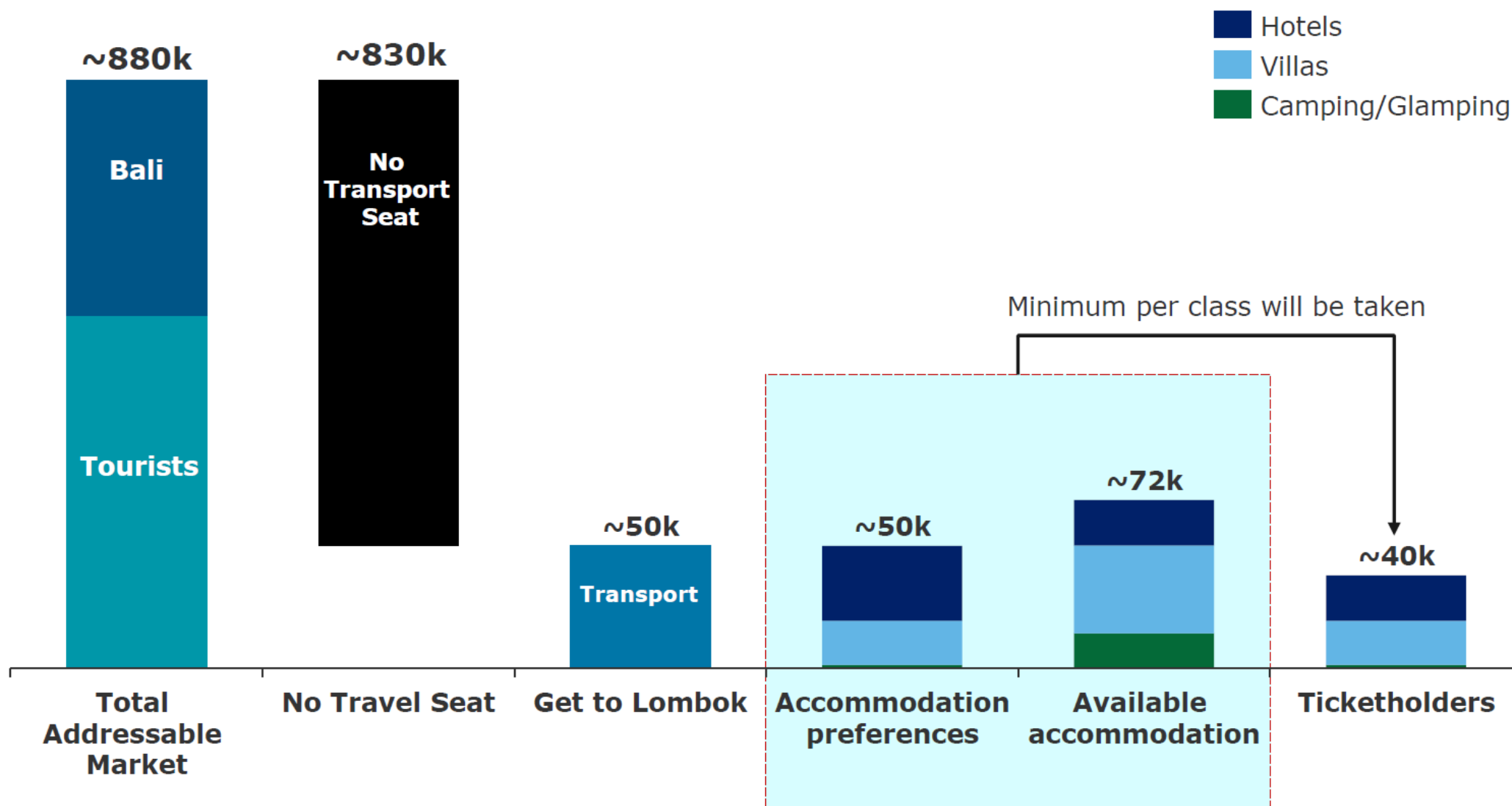
*Earliest flight from Bali to Lombok is at 9 am (will arrive late to Circuit) & will cost over 1 Mn Rp/Day PAX on a normal Friday

1 Hotel concentration mostly in Mataram, Senggigi, Kuta, & Praya (2-hour commute)



1 Current accommodations are expected to be short of ticketholder preferences

MotoGP: Accommodations in Lombok in pax





THANK YOU AND WELCOME TO THE MANDALIKA

STRICTLY CONFIDENTIAL

DISCLAIMER

The information contained in our presentation is intended solely for your personal reference. In addition, such information contains projections and forward-looking statements that reflect the Company's current views with respect to future events and financial performance. These views are based on assumptions subject to various risk. No assurance can be given that further events will occur, that projections will be achieved, or that the Company's assumptions are correct. Actual results may differ materially from assumed projections.